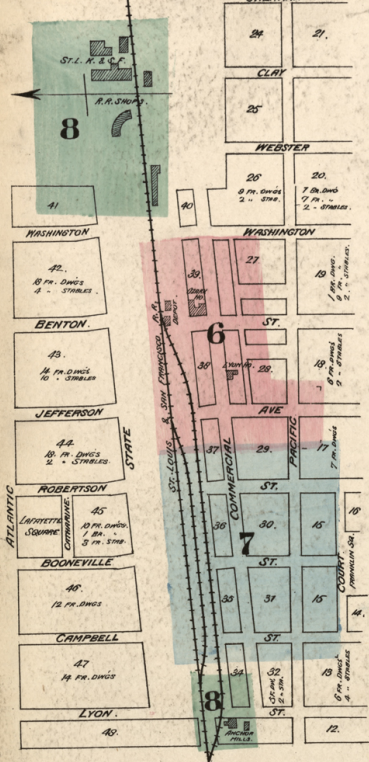


NORTH SPRINGFIELD



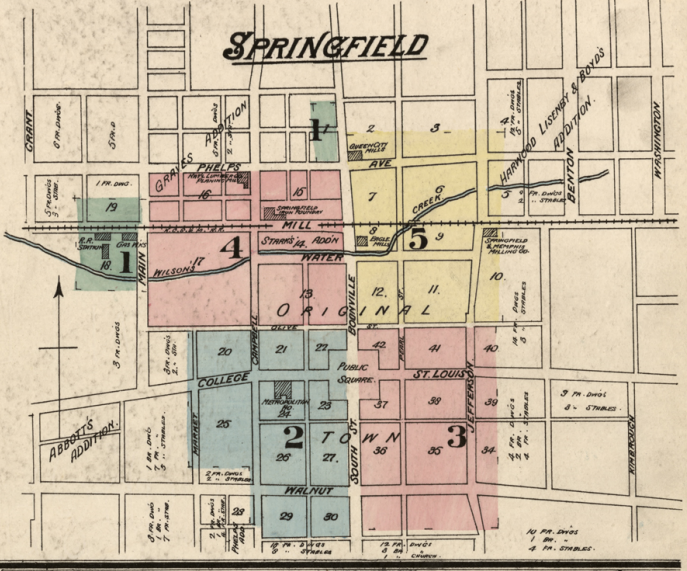
REPORT
 Population 18000, including North Springfield.
 Prevailing Winds SW.
 1000 ft. of 2nd floor - Two Elevators & one ladder.
 Naves, kept in City Buildings - No Fire Engines.
 Water facilities - Water works (Artemis system) 2 miles
 north of town, supplies both North & South Springfield.
 Volunteer Fire Company - Houses on Roberts 25th.
 Per sq. in. with 2 stories - 100.
 Water works see above. 75' W. of 2nd floor.
 Pressure on 250000 lbs. per sq. in. with steam on
 cases of 1000000 0000 lbs. - No Fire Engines.
 Two Elevators, 1000 ft. of 2nd floor - One St. & Ladder Naves.

INDEX.

- SPECIALS.**
- A. Agnew, J. L. Livery
 - B. American Hotel
 - C. Ancker Flour Mills
 - D. Brown, S. A. & Co. Lumber Yard
 - E. Calvary Presbyterian Church
 - F. Christian Church
 - G. City Hall
 - H. Colored Methodist Church
 - I. Court House & Jail
 - J. Davis, B. E. Wood Works
 - K. Eagle Flour Mills
 - L. Fairbanks Hall Seminary
 - M. Four Mill, Bowditch St. near Pacific
 - N. Finco Open House
 - O. Gas Works
 - P. Hammond Milling Co.'s Roller Mills
 - Q. Hayes, J. Livery
 - R. Home Lumber Co.'s Yard
 - S. Jones, S. Livery
 - T. K. C. S. & M. R. R. Depot
 - U. Lyons Hotel
 - V. MacLaughlin, R. W. Lumber Yard
 - W. Metropolitan Hotel
 - X. National Lumber Co.
 - Y. North Methodist Church
 - Z. Open House
 - AA. Oak Hill
 - AB. Platoon Hotel
 - AC. Fincher & Morrow Livery
 - AD. Presbyterian Church
 - AE. Queen City Flour Mill
 - AF. Riggs Hotel
 - AG. Eliot's Stables
 - AH. South & Hall, Livery
 - AI. S. Enos Hotel
 - AJ. Lewis Hotel
 - AK. J. & S. F. R. H. Freight Depot
 - AL. Passenger
 - AM. Southern Hotel
 - AN. Southeast Brewery
 - AO. Southwestern Building
 - AP. Springfield & Mansfield Milling Co.
 - AQ. Cotton Mill
 - AR. Iron Foundry
 - AS. Boiler Mill
 - AT. Weldon Mill
 - AU. Street Car Stables
 - AV. Transient Hotel, Jefferson St.
 - AW. South St.

SPRINGFIELD

M.O. MAY 26 1884
SANBORN MAP & PUBLISHING CO.
 LIMITED
 SCALE 50 FT. TO AN INCH
APRIL 1884
 115 BROADWAY, NEW YORK
 COPYRIGHT, 1884, BY THE SANBORN MAP & PUBLISHING CO. LIMITED



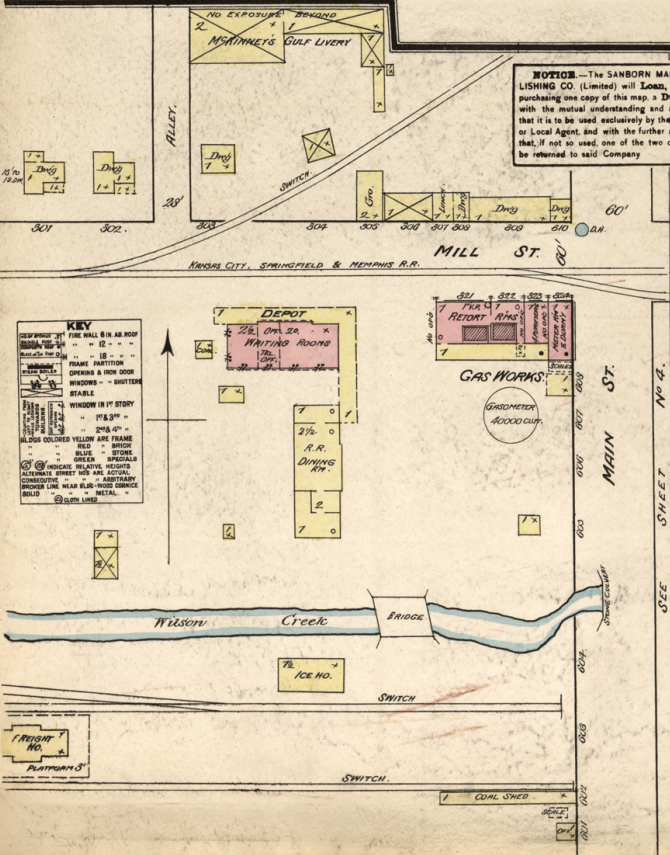
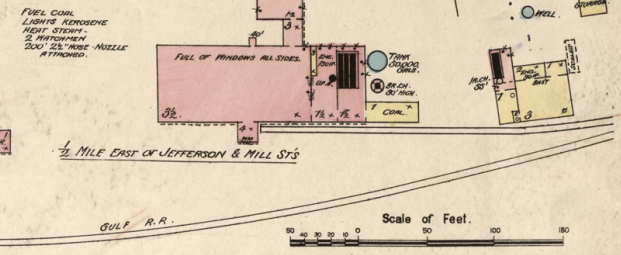
NOTICE - The SANBORN MAP & PUBLISHING CO. (Limited) will loan, to parties purchasing one copy of this map, a Duplicate, with the mutual understanding and agreement that it is to be used exclusively by their General or Local Agent, and with the further agreement that, if not so used, one of the two copies will be returned to said Company.

SPRINGFIELD COTTON MILL

- 1st FLOORING - 100 LUMBS - PRESS & CLOTH FINISHER
- 2nd COTTONS - 300 COTTONS - 7 CUMBERLAND COLLEGE
- 3rd SPINNING - 80 SPINNING FRAMES - 8 CUMBERLAND
- 4th SPINNING - 80 SPINNING FRAMES - 8 REELS
- 5th SPINNING - 80 SPINNING FRAMES - 1 REEL
- PICKING ROOM - 7 MILLION - 1 OPENER - 1 LUMBER - 2nd DRESSING

SPRINGFIELD ROLLER MILLS

HARRISON MILLING CO.
 MILL



KEY
 FIRE WALL 6 IN. OR ROOF
 FRAME MATTING
 OPENING & IRON DOOR
 WINDOWS IN 1st STORY
 WINDOW IN 2nd STORY
 WINDOW IN 3rd STORY
 WINDOW IN 4th STORY
 WINDOW IN 5th STORY
 WINDOW IN 6th STORY
 WINDOW IN 7th STORY
 WINDOW IN 8th STORY
 WINDOW IN 9th STORY
 WINDOW IN 10th STORY
 WINDOW IN 11th STORY
 WINDOW IN 12th STORY
 WINDOW IN 13th STORY
 WINDOW IN 14th STORY
 WINDOW IN 15th STORY
 WINDOW IN 16th STORY
 WINDOW IN 17th STORY
 WINDOW IN 18th STORY
 WINDOW IN 19th STORY
 WINDOW IN 20th STORY
 WINDOW IN 21th STORY
 WINDOW IN 22th STORY
 WINDOW IN 23th STORY
 WINDOW IN 24th STORY
 WINDOW IN 25th STORY
 WINDOW IN 26th STORY
 WINDOW IN 27th STORY
 WINDOW IN 28th STORY
 WINDOW IN 29th STORY
 WINDOW IN 30th STORY
 WINDOW IN 31th STORY
 WINDOW IN 32th STORY
 WINDOW IN 33th STORY
 WINDOW IN 34th STORY
 WINDOW IN 35th STORY
 WINDOW IN 36th STORY
 WINDOW IN 37th STORY
 WINDOW IN 38th STORY
 WINDOW IN 39th STORY
 WINDOW IN 40th STORY
 WINDOW IN 41th STORY
 WINDOW IN 42th STORY
 WINDOW IN 43th STORY
 WINDOW IN 44th STORY
 WINDOW IN 45th STORY
 WINDOW IN 46th STORY
 WINDOW IN 47th STORY
 WINDOW IN 48th STORY
 WINDOW IN 49th STORY
 WINDOW IN 50th STORY
 WINDOW IN 51th STORY
 WINDOW IN 52th STORY
 WINDOW IN 53th STORY
 WINDOW IN 54th STORY
 WINDOW IN 55th STORY
 WINDOW IN 56th STORY
 WINDOW IN 57th STORY
 WINDOW IN 58th STORY
 WINDOW IN 59th STORY
 WINDOW IN 60th STORY
 WINDOW IN 61th STORY
 WINDOW IN 62th STORY
 WINDOW IN 63th STORY
 WINDOW IN 64th STORY
 WINDOW IN 65th STORY
 WINDOW IN 66th STORY
 WINDOW IN 67th STORY
 WINDOW IN 68th STORY
 WINDOW IN 69th STORY
 WINDOW IN 70th STORY
 WINDOW IN 71th STORY
 WINDOW IN 72th STORY
 WINDOW IN 73th STORY
 WINDOW IN 74th STORY
 WINDOW IN 75th STORY
 WINDOW IN 76th STORY
 WINDOW IN 77th STORY
 WINDOW IN 78th STORY
 WINDOW IN 79th STORY
 WINDOW IN 80th STORY
 WINDOW IN 81th STORY
 WINDOW IN 82th STORY
 WINDOW IN 83th STORY
 WINDOW IN 84th STORY
 WINDOW IN 85th STORY
 WINDOW IN 86th STORY
 WINDOW IN 87th STORY
 WINDOW IN 88th STORY
 WINDOW IN 89th STORY
 WINDOW IN 90th STORY
 WINDOW IN 91th STORY
 WINDOW IN 92th STORY
 WINDOW IN 93th STORY
 WINDOW IN 94th STORY
 WINDOW IN 95th STORY
 WINDOW IN 96th STORY
 WINDOW IN 97th STORY
 WINDOW IN 98th STORY
 WINDOW IN 99th STORY
 WINDOW IN 100th STORY

