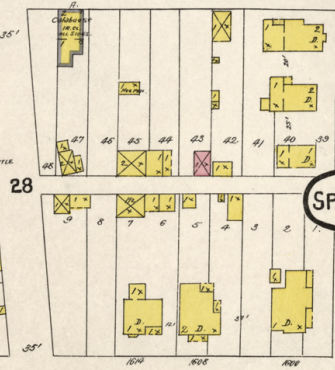


JULY 1896
SPRINGFIELD
MO.

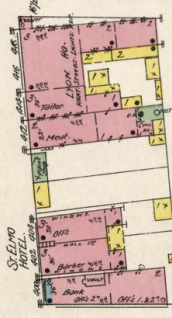
21

20

ARCADE



28

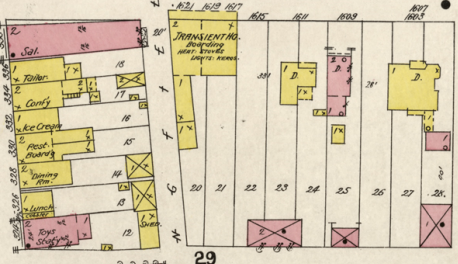


ST. ELMO



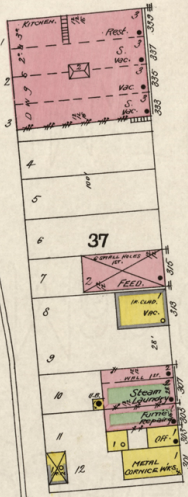
38

N. JEFFERSON



29

E. COMMERCIAL



37

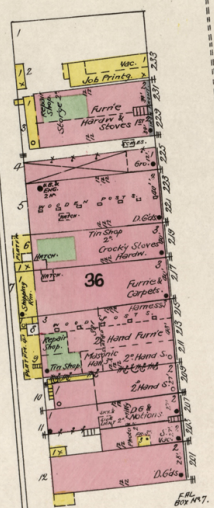
E. PACIFIC

18

ROBBERTSON AV.



30

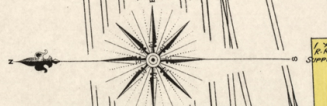
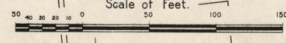


36

BOONVILLE

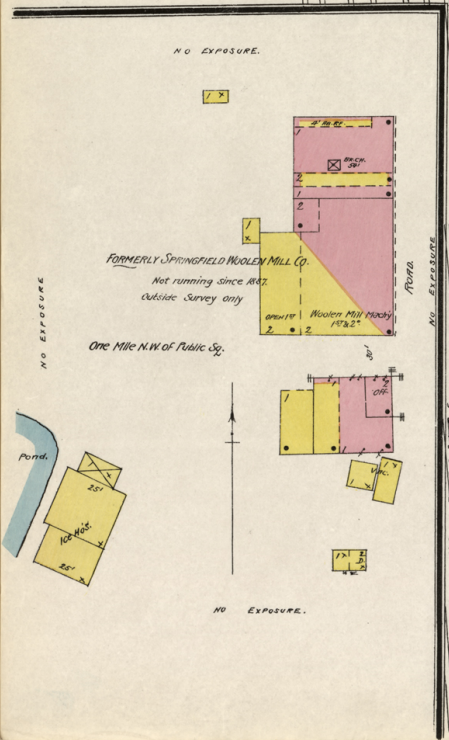
19

Scale of Feet



ST. LOUIS & SAN FRANCISCO R.R.

FORMERLY SPRINGFIELD WOODEN MILL CO.
Not running since 1887.
Outside Survey only.
One Mile N.W. of Public Sq.



NO EXPOSURE

NO EXPOSURE

NO EXPOSURE

NO EXPOSURE

Map Division